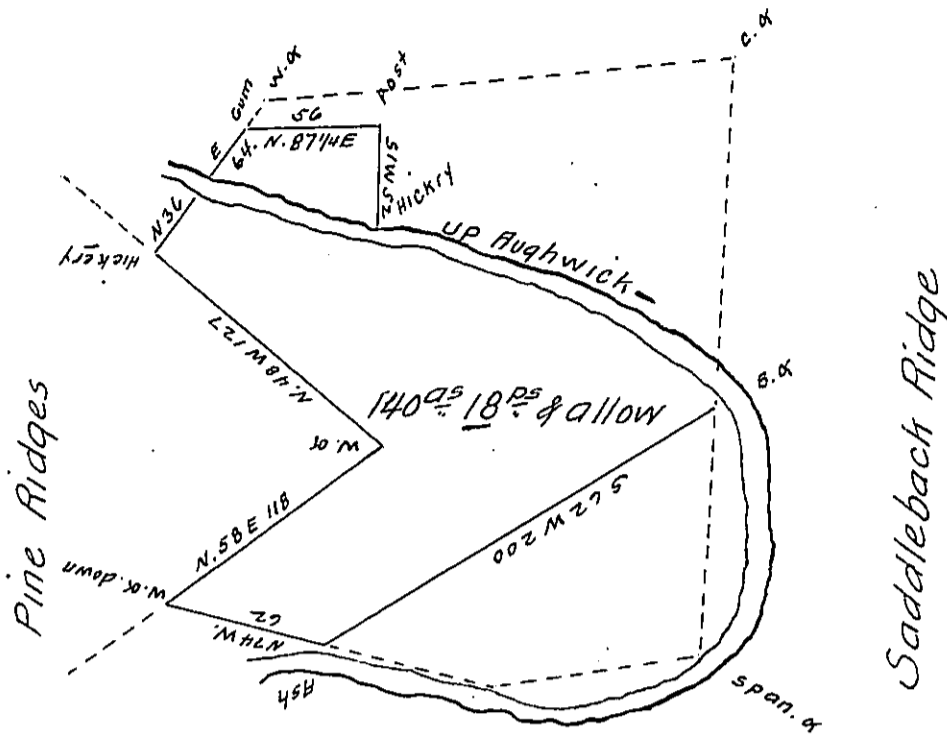


*Courses and distances up Hughwick Creek
from the Hickery to the Black .o.*

- S. 86 1/2 E. 21.4
- S. 77 E. 12.
- S. 68 E. 24.
- S. 78 E. 16.
- S. 74 1/2 E. 22.
- S. 55 E. 12.
- S. 48 E. 30.
- S. 39 E. 14.
- S. 21 E. 14. . . B.o



*George Clugage now
William McIntyre*

Situate in Springfield Township Huntingdon County Containing One Hundred forty acres 16 perches and the usual Allowance. The above is part of a tract of Land first Surveyed the 13th day of August 1795 for Robert Clugage Ju^r. In pursuance of his Order on application No 3230. dated the 27th day of March 1767 Said to Contain 264^{acs} 18^{ps} & allowance. this part Resurveyed and divided from the residue of said tract the 23^d day of May 1827.

*To Gabriel Hiester Esq^r
Surveyor General*

Daniel Africa D.S.

IN TESTIMONY that the above is a copy of the original remaining on file in the Department of Internal Affairs of Pennsylvania, made conformably to an Act of Assembly approved the 16th day of February, 1833, I have hereunto set my Hand and caused the Seal of said Department to be affixed at Harrisburg, this twenty seventh day of August 1906.

Isaac B. Brown
Secretary of Internal Affairs.